

Findability • Analytics • Data Extraction • Data Transformation • Real-Time Indexing



# DRAGONGLASS

Enabling Search Powered Applications

w w w . d r a g o n g l a s s . m e

Provides all the capabilities to build powerful search enabled applications

Getting started is as easy as...

1

Name your search engine and select your data sources.

2

Upload files, crawl websites or extract data from SQL databases.

3

DragonGlass auto generates an application for you.

A Sample Search Powered Application

The screenshot displays a user interface for a search-powered application. At the top, it shows a 'Client Portfolio' header with a search bar and user information. Below this, there are navigation tabs: 'MY DASHBOARD', 'MY ACCOUNTS', and 'PRODUCTS & SERVICES'. The main content area is divided into several sections:

- Acme, Inc. (ACE):** A profile card showing industry (Life Insurance), market cap (\$57.31B), and total assets (\$885.29B).
- CURRENT PRODUCTS & SERVICES:** A list of services including Counter Services, Foreign Currency Payments, Foreign Exchange (FX) Trading, Lockbox Services, and Check Clearing.
- SERVICE REQUESTS:** A table with columns for 'INITIATE TRANSACTION', 'CHANGE', 'INFORMATION', 'PROBLEM', and 'CONSULTATIVE', showing counts for each category.
- PERFORMANCE:** A line chart showing data trends over time, with a date range of 06-MAY-2014 02:53 PM EDT.
- DOCUMENTS:** A table listing documents such as 'Singapore Lockbox Terms & Conditions' with columns for type, title, state, version, description, last update, upload new, and signature.
- CONTACTS:** A list of contact cards for Nadine Barrett, Anne Glower, and Shawn Tyler, each with a profile picture and role.

Three upward-pointing arrows are positioned below the 'SERVICE REQUESTS', 'PERFORMANCE', and 'DOCUMENTS' sections, pointing towards the 'DRAGONGLASS PLATFORM' logo at the bottom of the image.

**DRAGONGLASS**  
P L A T F O R M

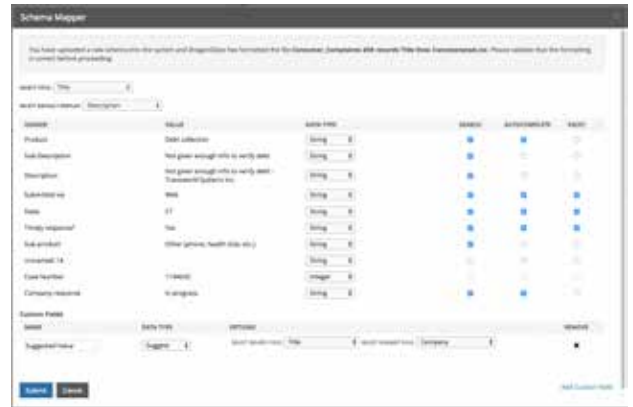
# Extract structured & unstructured content

- Easy to use Admin console to manage data extraction
- Load data on demand or setup an automated schedule
- Load and extract data form multiple sources – structured data from databases and Excel files, unstructured data from crawled websites, pdf, word and text documents
- Enrich data as needed using provided hooks for each record indexed



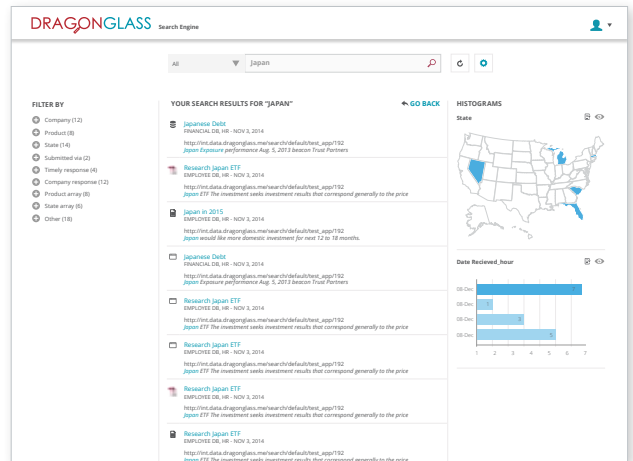
## Data Mapper

- Map field types
- Configure DragonGlass search options e.g:
  - Searchable,
  - Auto-suggest
  - Set filters
- Add new field mappings



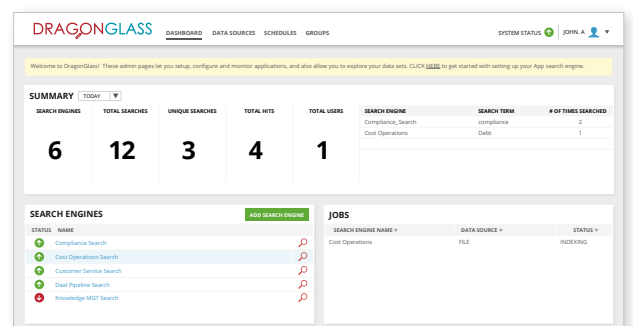
## Auto Generated Discovery Application

- Start discovering data patterns, relationships and insights as data is indexed
- Use the auto-generated search application out-of-the-box or customize it further for your end users
- Search application includes built-in features like facets, data histograms, maps, auto-suggest etc.
- Gain insights by examining combined views of structured and unstructured data



## Search Analytics & Admin Dashboard

- View analytics on index, hits, usage, data types and more
- Use admin console to monitors system status, performance and usage metrics
- Administer search engines via the console



# Potential DragonGlass Use Cases:

360 Client View Dashboard

Monitoring System Logs

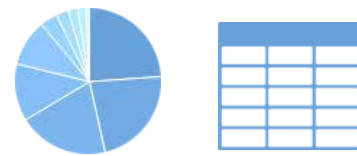
Boost Performance of Existing Applications

Enrich Legacy Applications by Enabling Search

## REST Based API

```
import requests
requests.get('www.dragonglass.me/search/api/app',
             {'q': 'japan exposure'},
             auth = Auth(' ', 'password')
            )
```

## Widget Library



## Cloud & On-Premise



## Technology

elasticsearch.



RabbitMQ

docker



# DRAGONGLASS

Enabling Search Powered Applications

41 East 11th Street, 11th Floor, New York, NY 10003

Phone: 212 768 1730 Fax: 212 768 1792 www.dragonglass.me sales@dragonglass.me & info@dragonglass.me